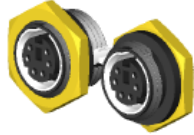
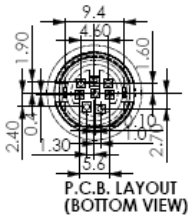
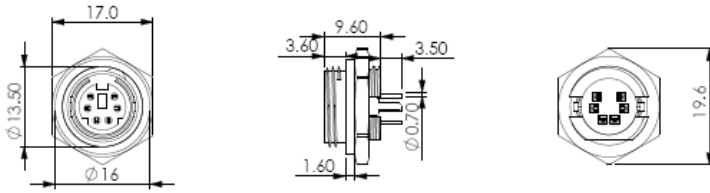


# YE-141XB MINI DIN SOCKET PANEL MOUNT



YE-1413B	YE-1414B	YE-1415B	YE-1416B	YE-1418B

## MATERIAL :

1. SHIELD COVER : BRASS TIN PTD.
2. SCREW NUT : BRASS
3. HOUSING : PBT
4. TERMINALS : BRASS SILVER PTD.

## SPECIFICATION :

1. current carrying capacity
  - 1) AC : 100V 1A MAX.
  - 2) DC : 12V 2A MAX.
2. contact resistance : 30m  $\Omega$  MAX.
3. insulation resistance : 50M $\Omega$  MIN. @ DC 250V
4. voltage withstand : AC 250V for 1 minute



YE-1413B



YE-1414B



YE-1415B



YE-1416B



YE-1418B